

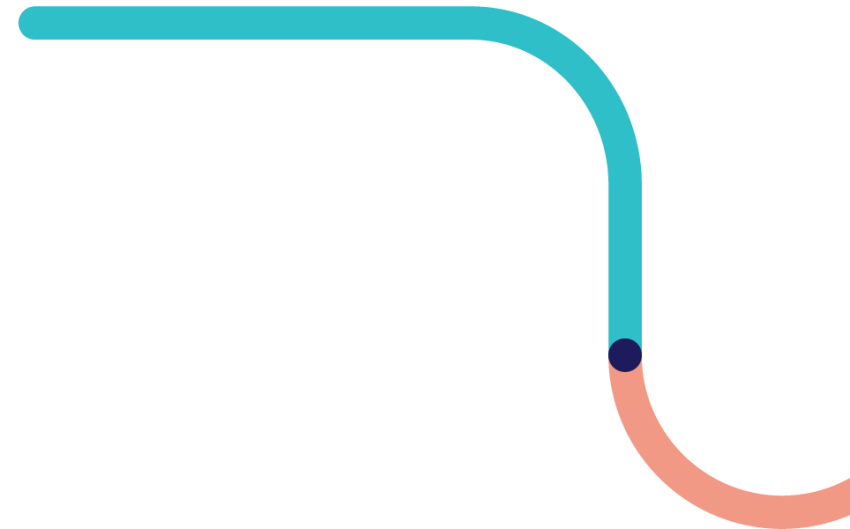
#MobilizeMinds 2026

Course Overview *(as of April 2026)*

Learning Opportunities by TUMI and Global Partners

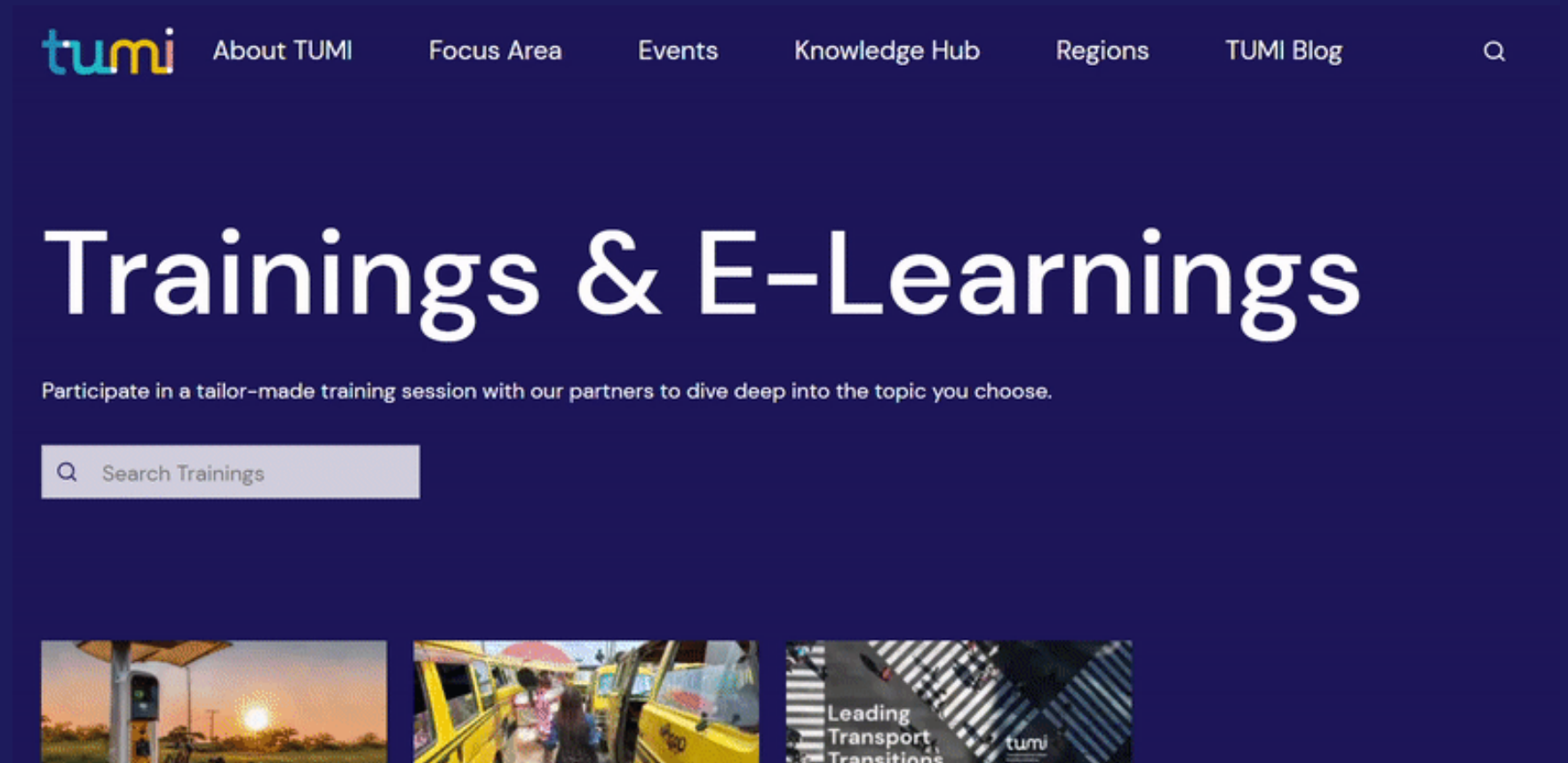


Transformative Urban
Mobility Initiative



TUMI Learning Platform

Our e-learning page features courses from TUMI, GIZ and our partner organizations



The screenshot displays the TUMI Learning Platform website. At the top, the TUMI logo is on the left, and navigation links for 'About TUMI', 'Focus Area', 'Events', 'Knowledge Hub', 'Regions', and 'TUMI Blog' are on the right. A search icon is also present. The main heading is 'Trainings & E-Learnings' in large white text. Below it, a sub-heading reads: 'Participate in a tailor-made training session with our partners to dive deep into the topic you choose.' A search bar with the placeholder text 'Search Trainings' is located below the sub-heading. At the bottom, there are three image thumbnails: the first shows a solar panel installation, the second shows a yellow taxi, and the third shows a person working on a circuit board with the text 'Leading Transport Transitions' and the TUMI logo.

TUMI @ FutureLearn platform

Soon
migrating
to GIZ
platform
Atingi!

We host
most of our
e-learning
courses on
[Future
Learn](#)



The screenshot shows the FutureLearn website interface. At the top left is the FutureLearn logo. To its right are navigation links: "Subjects", "Courses", and "FutureLearn for business". A search icon is visible on the right side. The main content area features the title "Transformative Urban Mobility Initiative (TUMI)" and a sub-section "About". The text under "About" describes TUMI as an initiative implemented by GIZ and funded by the German Federal Ministry for Economic Cooperation and Development (BMZ). It mentions that TUMI is the leading global implementation initiative on sustainable mobility, formed through the union of 11 prestigious partners, with a vision of thriving cities with enhanced economic, social, and environmental mobility. To the right of the text is the TUMI logo, which consists of the lowercase letters "tumi" in a colorful font (blue, green, yellow, red) with the full name "Transformative Urban Mobility Initiative" underneath. In the bottom right corner of the page, there is a "Support" button.

FutureLearn Course Modalities – All you need to know

Moderated*, self-paced** and free of charge

- All TUMI and partner courses are free of charge
- Select 'limited access' at the bottom of the course page***
- Complete the course within the standard time frame (e.g. 4 weeks)
- Enrollment is possible until the last day of the scheduled course run, entitling you to complete the course during the standard time frame
- Most courses are moderated and feature live-sessions (during the scheduled run time)

* Scheduled courses usually feature **live sessions with invited expert speakers**, as well as **interactive and moderated fora discussions**. Live sessions are being **recorded**; otherwise, all courses can be done **self-paced within the given time-frame**.

Purely self-paced courses can be done **anytime and allow for **limited interaction** with other **participants**.

***Future Learn offers a **non-mandatory paid subscription** model with extended platform access and further services.


Do you have any question or face troubles? Please reach out to us:
➤ info@transformative-mobility.org

Certificates provided by TUMI and GIZ

Digital Certificate by TUMI & GIZ

- Complete 100% of the course and upload a proof of completion
- For partner courses, please directly look into the course details or reach out to the course providers, in most cases certificates are being issued

Upload proof of completion (screenshot) and enter your personal data:

- Courses for which TUMI issues a certificate are marked with 
- To request your certificate follow this link: [Certificate Request Form](#)
- We kindly ask you to voluntarily consent to processing your data for internal monitoring purposes. This helps us in the further development of our learning offers.

Optional: Certificate issued by Future Learn:

- *Requires a monthly subscription or one-off payment with Future Learn*

Do you have any question? Please reach out to us:

➤ info@transformative-mobility.org

Scheduled course runs



An Introduction to Women and Mobility in Emerging Economies

- Explore gender and mobility in a 6-week course by Women Mobilize Women and gain insights into the link between transport and gender equity
- Emphasizes gender-sensitive planning and addresses historical biases, and the gender data gap in transport
- Suitable for participants of all experience levels

[Click here for all details and inscription](#)

giz Deutsche Gesellschaft
für Internationale
Zusammenarbeit (GIZ) GmbH

iw Women
Mobilize
Women



Next course run: April 27, 2026

Duration: 6 weeks (3 hours/week)
Language: English



Fundamentos del Análisis de Datos para la Movilidad Sostenible

- «Lo que se mide se gestiona»: el plan de estudio se **centra tanto en la medición como en la gestión de datos de transporte.**
- Adquirirás conocimientos sobre recopilación de datos para la **planificación del transporte, ingeniería de tráfico, diseño vial y operaciones del transporte**, utilizando diversas herramientas y técnicas de procesamiento, análisis, visualización y gobernanza de datos.
- El curso abarca de forma integral **métodos tradicionales e innovadores de medición y gestión de datos aplicables** tanto al transporte privado como al público.
- [**Haz clic aquí para ver todos los detalles e inscribirte.**](#)

giz Deutsche Gesellschaft
für Internationale
Zusammenarbeit (GIZ) GmbH

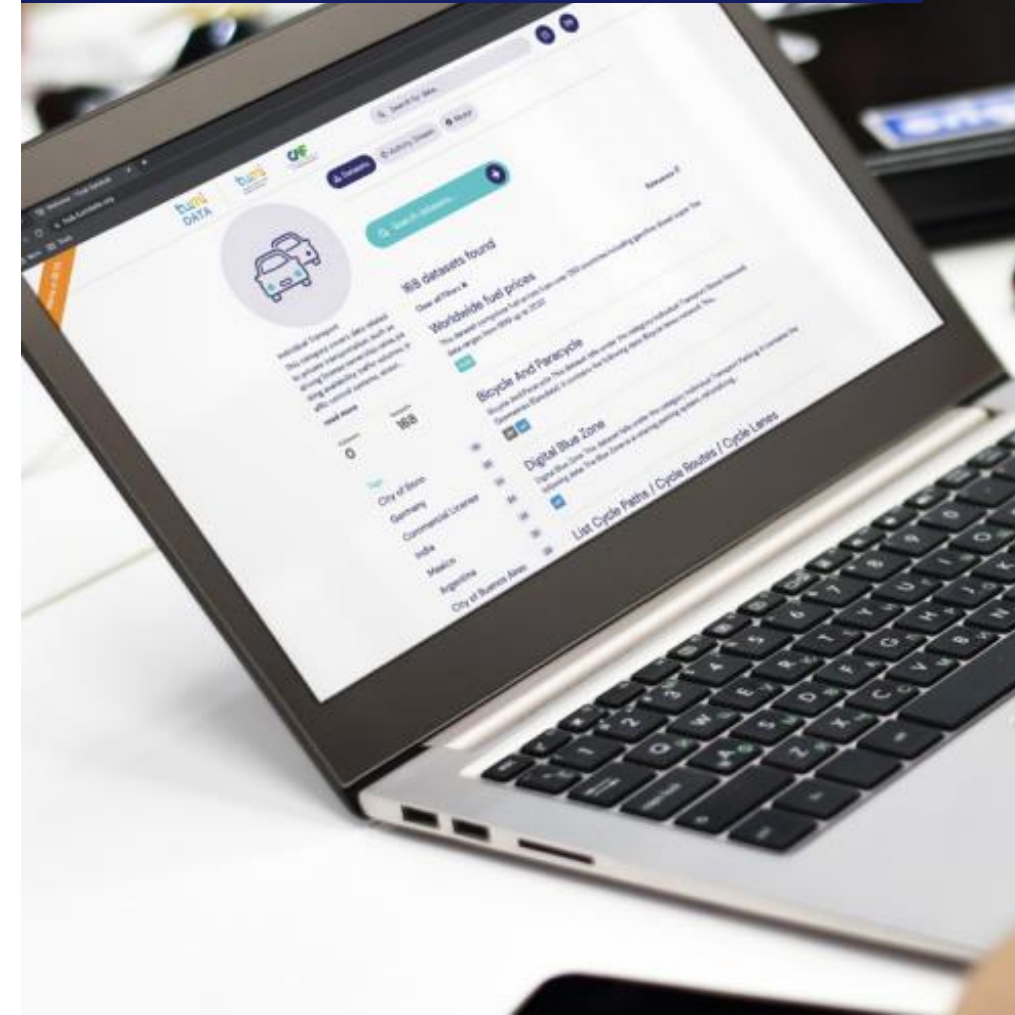


Fecha de inicio: 4 de mayo, 2026
Duración: 5 semanas
Estudio semanal: 2-3 horas
Idioma: español



Mas de 2000 alumnos en el curso en inglés no pueden estar equivocados...

¡No te pierdas tu próxima oportunidad!





Exploring the World of Electric 2-3 Wheelers: Steering the Mobility Revolution

- This course explores the surging popularity of electric two-and-three-wheelers in the Global South
- A wide range topics such as governmental regulations, technological advancements, and financial strategies essential for the adoption of electric mobility
- Targets individuals working or planning to work in the transport sector
- Click [here](#) to register

giz Deutsche Gesellschaft
für Internationale
Zusammenarbeit (GIZ) GmbH



RWTH AACHEN
UNIVERSITY

PEM MOTION



Next course run:

Ongoing, join now until May 3!

Duration: 6 weeks (3 hours/week)

Language: English and Spanish





Exploring the World of Electric Mobility: Key Concepts and Strategies

- Inclusive introductory course, welcoming all backgrounds to explore electric mobility in emerging economies and developing countries
- Six-week program includes interviews, lectures, and real-world cases examining technology, policies and sustainability; acquiring knowledge to shape sustainable mobility solutions in your context

[Click here for all details and inscription](#)



Next course run: TBA
Duration: 6 weeks (3 hours/week)
Language: English and Spanish





Exploring the World of Electric Buses: Advancing Zero-Emission Public Transport

- Building on the introductory course on e-mobility this course specifically focuses on key aspects of e-bus projects
- Find out how best to introduce electric buses as a clean and efficient public transport solution in your city
- The 6-week course best suits policy and decision-makers and practitioners working on public transport
- Sign up [here](#).



Next course run: TBA

Duration: 6 weeks (3 hours/week)

Language: English and Spanish



Data Fundamentals for Sustainable Mobility

- “What gets measured gets managed,” the curriculum **focuses on both the measurement and management of transport data**
- You will gain insights into collecting data for transport **planning, traffic engineering, street design, and transport operations**, utilising diverse tools and techniques for processing, analysis, visualization, and governance
- The course comprehensively covers **traditional and innovative data measurement and management methods** applicable to both private and public transport

[Click here for all details and inscription](#)

giz Deutsche Gesellschaft
für Internationale
Zusammenarbeit (GIZ) GmbH

**CITIES
FORUM**

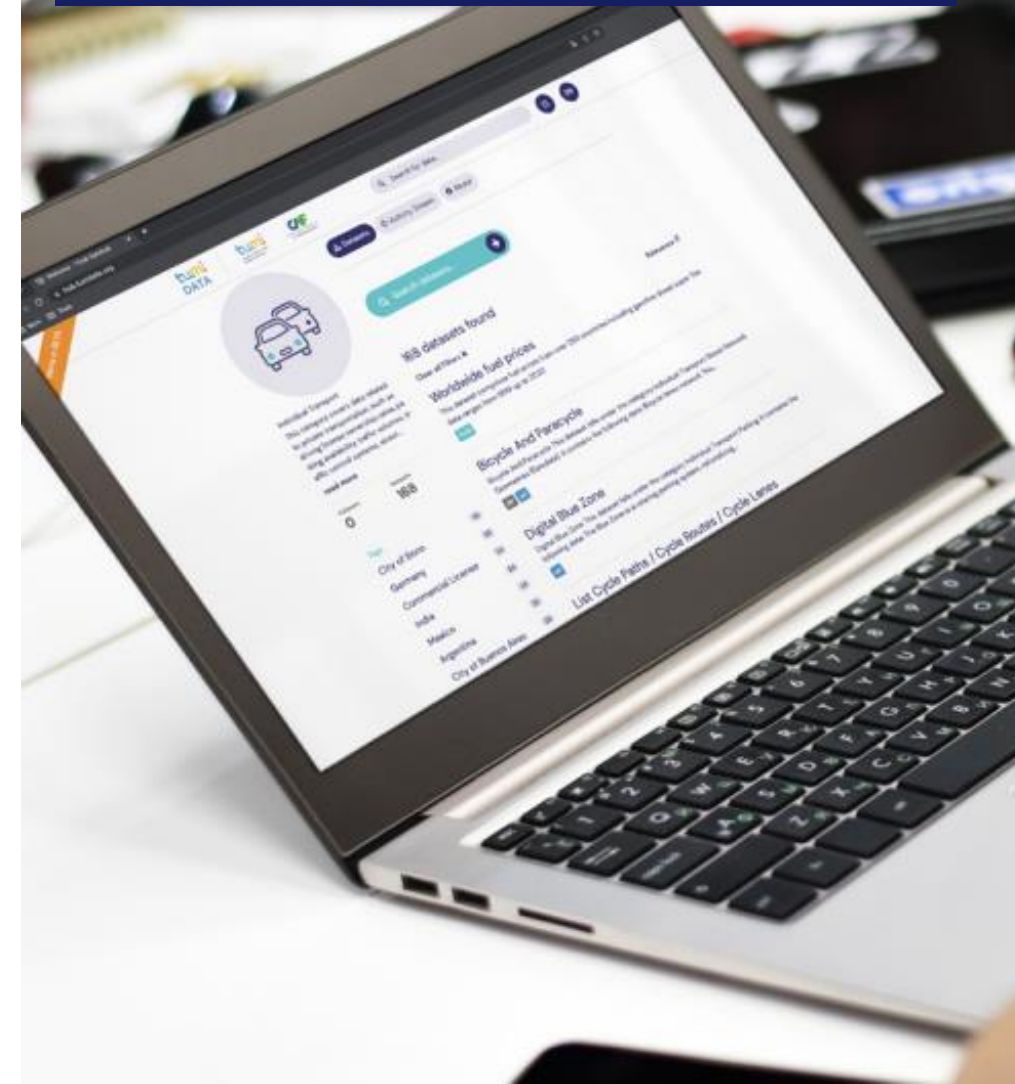
Starting Date: TBA
Duration: 5 weeks
Weekly study: 2 – 3 hours
Language: English



tumi

More than 2000 learners in the first runs can't be wrong...

Don't miss out your next chance!



MOOC
MOBILITÉS URBAINES
EN AFRIQUE



Mobilités Urbaines en Afrique

- Course organized by Université Senghor, Campus Groupe AFD, CODATU, and AUF
- Dives into challenges and opportunities shaping urban mobility in Africa
- Explore strategies for aligning transportation services with the evolving needs of African cities
- Certificate available upon course completion



Next course run: TBA

Duration: 5 weeks (2 hours/week)

Language: French

Click [here](#) for details and registration

Your course is not scheduled right now?

You're only 2 steps away from your next learning opportunity:

1

Sign up to stay informed on all course news:
[TUMI Update](#)

Get all news right into your inbox

Receive our most important updates by email and stay up to date with the newest transformations on sustainable mobility around the world.

I have read and accepted the privacy policy.

2

Inscribe for E-Mail notifications at the
[Future Learn course page \(click here\)](#)

[Email me when I can join](#)

387 enrolled on this course

All scheduled courses run at least once per year.

Courses on your demand

Anytime courses



Transforming Urban Mobility Part 1: Introduction to Transport Planning for Sustainable Cities

- 4-week course with focus on the impacts of motorization, introduces the AVOID-SHIFT-IMPROVE (ASI) framework, and integrated transport systems
- Equips participants with instruments of traffic demand management and integrated land-use and transport planning (AVOID); equips participants with knowledge and skills for supporting the planning of great cities through sustainable urban mobility

[Click here for all details and inscription](#)

giz Deutsche Gesellschaft
für Internationale
Zusammenarbeit (GIZ) GmbH



Starting Date: ANYTIME

Duration: 4 weeks (3 hours/week)

Language: English, Spanish



Transforming Urban Mobility Part 2: Components of Transport Planning for Sustainable Cities

- A 5-week course that follows *Introduction to Transport Planning for Sustainable Cities*
- Focuses on the SHIFT and IMPROVE component of the ASI framework; debates the role of active mobility and streetscape design; improvements to vehicle technology and assess effective decision-making and participatory processes

[Click here for all details and inscription](#)

giz Deutsche Gesellschaft
für Internationale
Zusammenarbeit (GIZ) GmbH



Starting Date: ANYTIME

Duration: 5 weeks (3 hours/week)

Language: English, Spanish





Achieving Transitions to Zero Carbon Emissions and Sustainable Urban Mobility

- Four-week digital course led by global experts on sustainable urban mobility transitions
- Explore policy tools, methods, and challenges for reducing carbon emissions and systems thinking approach to zero-carbon urban mobility
- Suitable for professionals, practitioners, and anyone interested, with no prerequisites.

[Click here for all details and inscription](#)



Starting Date: ANYTIME

Duration: 4 weeks (2 hours/week)

Language: English



Digitalizing E-Bus Projects

- 11-week course on implementing future-ready e-bus projects covering basics, scheduling, depot management, control systems, and operations assessment; includes a virtual study tour
- Focus on digital tools at three stages: planning, operations monitoring, and project evaluation
- Addresses data sharing challenges between transit agencies and operators

[Click here for all details and inscription](#)

giz Deutsche Gesellschaft
für Internationale
Zusammenarbeit (GIZ) GmbH



Starting Date: ANYTIME

Duration: 11 weeks (3,5 hours/week)

Language: English, Portuguese, Spanish



Mobility and Access for Babies, Toddlers, and Their Caregivers

- Delve into a comprehensive exploration of mobility and access for young children and caregivers, covering needs, solutions, and approaches for inclusive cities
- Tailored for professionals in planning, transportation, early childhood development, and health, as well as aspiring planners and decision-makers.

[Click here for all details and inscription](#)



Starting Date: ANYTIME

Duration: 2.5 hours

Language: English



©Sepa Sama

Mastering the Cycling City

- A comprehensive resource for city planners, practitioners, and advocates, offering context, guidance, and case studies aimed at enhancing urban cycling
- Covers vision, infrastructure, policies, and promotion of Cycling Cities, with flexible module order.

[Click here for all details and inscription](#)



Starting Date: ANYTIME

Duration: 4 hours
Language: English



©GIZ CiClim



Transport Data: From MRV to Action

- Online course on Measurement, Reporting and Verification (MRV) of greenhouse gas (GHG) emissions in transport sector
- Open for all, but designed for government officials working in transport or climate policy, including individuals concerned with emissions reporting
- Course is approved by UNFCCC

[Click here for all details and inscription](#)

giz Deutsche Gesellschaft
für Internationale
Zusammenarbeit (GIZ) GmbH

CHANGING
TRANSPORT



Starting Date: ANYTIME

Duration: 6 hours
Language: English



Project Preparation Readiness Training (PreP)

- You will understand the basic concepts of project preparation, including key areas, stages, and Project Preparation Facilities (PPFs).
- You will map out financing options and motivations for investments in sustainable infrastructure.

[Click here for all details and inscription](#)



Starting Date: ANYTIME

Duration: 3 hours
Language: English

Looking for Sustainable Mobility To Go?



Listen in to our podcast
[Talking Transport Transformation](#)



Explore our
[Sustainable Mobility Podcast Collection](#)

TUMI Knowledge Hub

TUMI offers a wealth of resources on sustainable mobility:

Thought-provoking publications, insightful webinars, interactive trainings, and engaging podcasts — all in one place.

Multimedia Library

Dive into our Multimedia Library and discover publications, videos, webinars, and much more.



Trainings & E-Learnings




Participate in a tailor-made training session with our partners to dive deep into the topic you choose.



Mobility Podcasts

TUMI's wide sustainable mobility podcast collection – start browsing now!



-  transformative-mobility.org
-  [@Transformative Urban Mobility Initiative](#)
-  [Transformative Urban Mobility Initiative](#)

Visit the [TUMI Knowledge Hub](#)



Become part of a global capacity building movement for sustainable mobility!

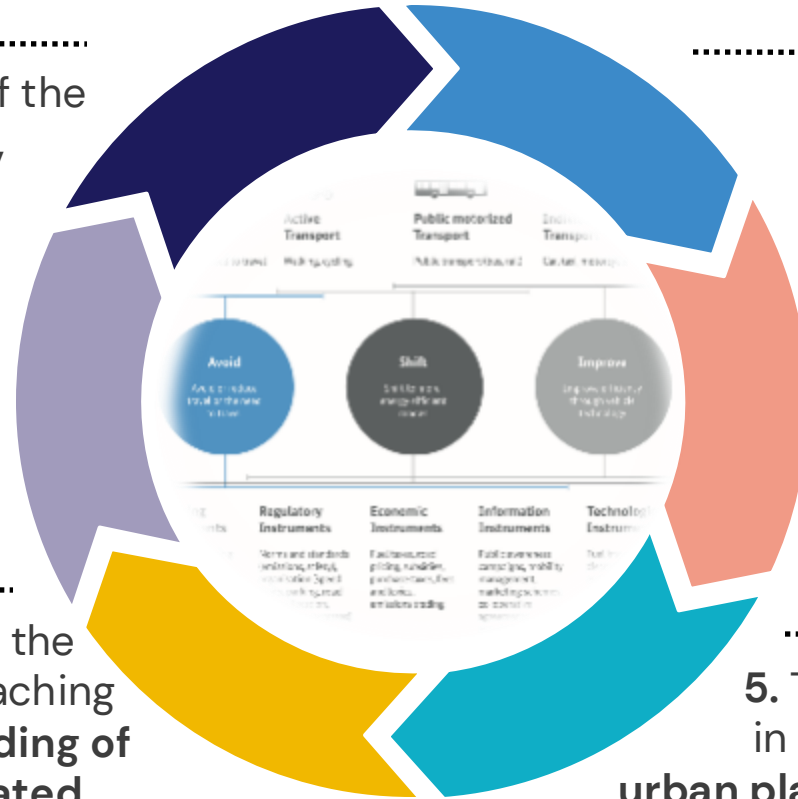
- 1) Approach unique and free-of-charge **e-learning by world-class institutions** and experts
- 2) **Share information on learning opportunities** with your employees, co-workers, (co-)students, and friends
- 3) **Engage with us**, and support capacity-building for decision-makers and professionals worldwide

7 Theses: Towards Capacity Development for Sustainable Mobility

1. To tackle the current challenges of the sector we need **intellectual reform, both in terms of professional education as well as the training curricula.**

7. We have to **equip training offers with standards, norms, and planning processes** towards people-centered mobility.

6. We need to update and integrate the thematic education and training, teaching a **more comprehensive understanding of how traffic is generated and mitigated** as well as how sustainable transport systems are developed.



2. Existing curricula are **often outdated and too narrowly focused on free-flowing transport.**

3. There is a **high demand for more systematically developed capacity development programs.**

4. We need to establish consensus on **which tasks a modern mobility department can and should take on.**

5. There is a lack of knowledge on mobility in **related areas such as energy services, urban planning, spatial planning and economic development** as well as similar disciplines, at times rudimentary and often placed out of context.



A leading global implementation initiative supporting city makers in developing and emerging countries in the transformation towards sustainable urban mobility.

Founded by these partners:



Reach out to our course managers team:

General requests



Caroline von Stein

caroline.vonstein@giz.de

Gender & Inclusion courses



Keisha Mayuga

keisha.mayuga@giz.de

Data & UCL courses



Lena Plikat

lena.plikat@giz.de

E-Mobility courses



Marvin Stolz

marvin.stolz@giz.de